

SPECIFICATIONS

System	
CPU	Intel® Quad-Core™ i7, 2.8GHz
Graphics Card	ATI FirePro Multiview™ 2460
RAM	4GB DDR3; 8GB upgrade (optional)
Storage	250GB HDD
Operating System	Microsoft® Windows® Embedded Standard 7
Display Resolution	7680 x 4320 for 4 x 4 digital signage array (max. DVI resolution 1920 x 1080 per display)
Video Resolution	Up to Super High Vision (up to Full-HD per display)
Network Interface	Dual 10/ 100/ 1000Mb BaseT LAN; Wi-Fi 802.11a/b/g (optional)
Software Compatibility	Compatible with WebDT Content Manager (WCM 4.0 SP1 or above recommended)
Input/Output Ports	4, 8, 12 or 16 DVI outputs (quad DVI outputs per card); 8 audio outputs (with 2 digital outputs); 10 USB 2.0 ports; 2 RJ45 connector for Ethernet; 1 IEEE 1394 port; optional WLAN (via internal PCI-Express slot or external USB)
Power	
Power Supply	350W ATX
Mechanical	
Enclosure	Aluminum + steel
Dimensions (H x W x D)	3.5 x 19 x 17 in/ 88.2 x 482.6 x 431 mm
Weight	22.16 lbs/ 10.05 kg
Environmental	
Temperature	Operation: 0°C - 40°C; Storage: -20°C - 60°C
Humidity	5% - 95% non-condensing

* Specifications subject to change without notice.

MS1600

BASIC OPERATION GUIDE



ENGLISH

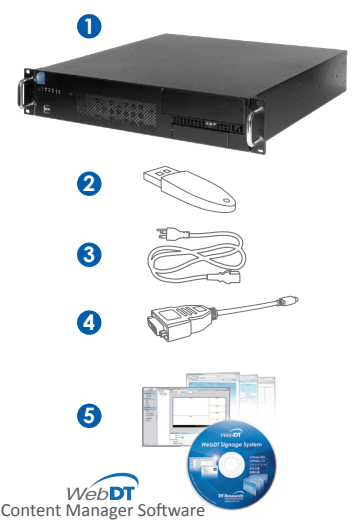
INTRODUCTION

Thank you for acquiring the MS1600, part of the DT Research Multi Screen Appliance line by DT Research. The MS1600 facilitates the creation of a unique and powerful communications medium that offers unparalleled opportunities to capture an audience's attention at key decision-making locations. The DT Research Multi Screen Appliances enable efficient deployments for digital signage, with reliable hardware features and innovative server-based software. The Microsoft® Windows® Embedded Standard 7 based MS1600 offers remote management of the devices and the displayed content with the WebDT Content Manager. The MS1600 together with the WebDT software suite offers an effective solution for delivering and managing messages that target audiences in the right place, at the right time.

Package Contents

1. One MS1600 Multi Screen Appliance
2. One security USB dongle
3. One power cord
4. Mini DP-to-DVI cables (four cables for one graphic card)
5. One WebDT Content Manager CD
6. One image recovery DVD
7. WebDT Content Manager Quick Start Guide
8. MS1600 Release Note 4.0
9. Basic operation guide

NOTE: The actual package contents may vary depending on the configuration acquired.



Connecting Peripherals

Connect the mini DP-to-DVI cables to the graphic card outputs (1) and make sure your monitors are connected the MS1600 with DVI-D cables (2). Then insert the USB key to a USB port (3). After the peripherals are connected, plug the power cord into the MS1600 (4) and insert the other end into a power outlet.



- <1> Connect the mini DP-to-DVI cables to the graphic card.
- <2> Connect the MS1600 with DVI-D cables.
- <3> Insert the USB key.
- <4> Connect the power cord.

NOTE: DO NOT connect the power cord before connecting the USB dongle and all cables to the MS1600.

Powering ON and OFF

Warning! Please make sure the selected voltage on the device matches the local voltage. Wrong voltage setting will cause damage on the power supply.

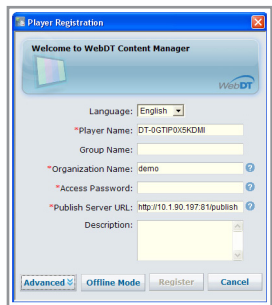
The Power Button is located on the front of the MS1600. To turn the MS1600 on, push and release the Power Button on the front bezel. The power LED will be lit (blue), and the corresponding interface will be shown on the display monitors. To turn off the device, use the software shutdown interface provided, or unplug the appliance. In the event of system lockup, unplug or re-plug the power cable. Also, the Power Button may be used to perform a reset on the device. To do that, push and hold the Power Button for at least 4 seconds. The system will shut down and all unsaved work may be lost. Pushing on the Power Button again will restart the device.

Server Installation

Please refer to the other documents included in the package to reference set up of your WebDT Content Manager server with the WebDT Content Manager CD.

Appliance Registration

After turning on the MS1600 for the first time, a screen prompt is displayed for registering the player. If the screen prompt is not shown, please follow the instructions below:



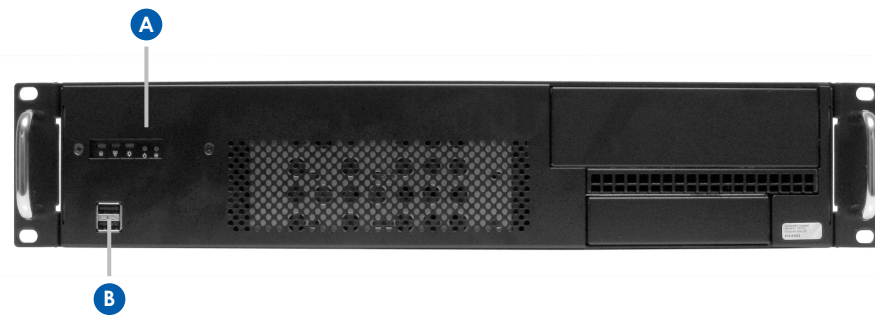
1. Press and hold "Control + Shift + Space" to exit the WCM Player software.
2. Navigate to Start | All Programs | DT Research | WebDT Signage Player
3. Select Register WebDT Signage Player Again. The Player Registration screen should appear. Fill in all fields to register. The required information is marked.
4. Click OK to register and connect to the WebDT Signage Appliance Publish Server.

Memory and Storage

Depending on the base software configuration, the user may need only the internal HDD of the MS1600 for user's installed software and storage. The user may also supplement storage space with USB-based peripherals such as flash disks, disk drives, etc.

I/O Ports

MS1600 Front



A Power button	B USB ports	C Digital audio outputs	D RJ45 connectors
E IEEE 1394 port	F Audio jacks	G Mini DisplayPorts (4 mini DP per card, up to 16 ports)	

MS1600 Rear

