

WebDT® Multi Screen Appliance MS1600 //



Key Features:

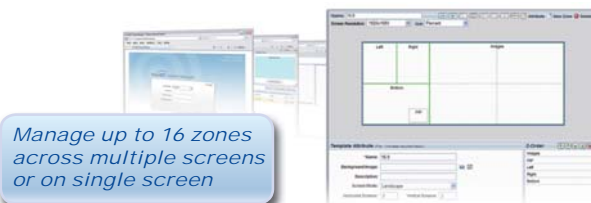
- Drives up to 16 screens; Full HD content supported on each screen
- Supports up to 7680 x 4320 Super Hi-Vision resolution, 16 times the pixel resolution of existing Full HD digital signage
- Up to 16 different zones of content for each display wall
- Content flexibility for image, flash and multimedia file formats stretched across multiple screens or played on a single screen
- Intuitive remote management with WebDT Content Manager software; manage up to 16 zones

The WebDT Multi Screen Appliance (MS1600) powers multiple screens for digital signage applications. Featuring the powerful and energy-efficient Intel® Quad Core™ processor, the MS1600 includes the latest graphics technology with up to 16 DVI connectors for high-quality video and optimal display experience.

Combined with the industry-leading WebDT Content Manager Software, one MS1600 is capable of driving dynamic content on up to 16 screens, while communicating with the server for continuous updates. These screens can be configured into one large video wall or they can be spread out to serve separate areas. Each screen has the ability to deliver up to 1920 x 1080 (Full HD) resolution on each screen.

WebDT Content Manager (ver.3.1 or above):

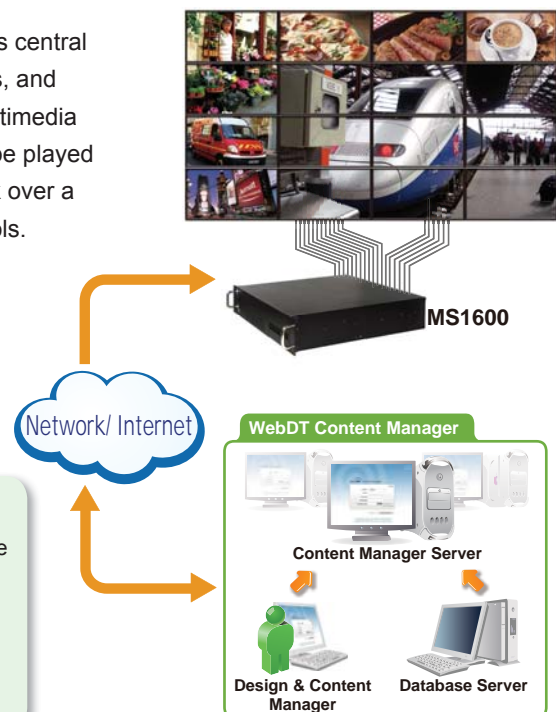
The web-enabled WebDT Content Manager software provides central management of WebDT signage appliances as media players, and automates the design and distribution of a wide variety of multimedia file formats. With WebDT Content Manager, the message to be played is assembled, scheduled, and delivered for dynamic playback over a network of appliances using standard file formats and protocols.



Manage up to 16 zones across multiple screens or on single screen

Feature Highlights:

- | | | |
|----------------------|--------------------|--------------------|
| • Groups and Players | • Multiple-zones | • Software Upgrade |
| • Edge Server | • Ticker | • Urgent Cast |
| • Media Management | • Playlist Editing | • Reporting |
| • System Management | • Preset Templates | • Auto Recovery |
| • Power Management | • Scheduling | |



The WebDT Multi Screen Appliance by DT Research enables efficient deployment of a digital signage system. The reliable hardware together with an innovative server software suite facilitates the creation of a unique and powerful communications medium that offers unparalleled opportunities to capture an audience's attention at key decision-making locations. When connected to a display, the MS1600 is ready to deliver vivid, timely, targeted communications, to the right place, at the right time.

Applications:

The WebDT Multi Screen Appliance is ideal for the following applications :

- Retail
- Kiosk
- Government
- Transportation
- Casino/ Entertainment
- Finance
- Hospitality
- Healthcare



2 x 2



4 x 4



4 x 1



Specifications:

System	Processor	Intel® Quad-Core™ i7- 2.66GHz
	Operating System	Microsoft® Windows®
	Software	WebDT® Content Manager
	RAM	Minimum configuration: 6GB DDR3
	Storage	Minimum configuration: 250GB SATA HDD
	Graphics	High-performance graphics for 4, 8, 12 or 16 DVI output (Quad DVI per card)
	Display Resolution	7680 x 4320 for 4 x 4 digital signage array (Max. DVI Resolution 1920 x 1080 per display)
	Display Connectors	4, 8, 12 or 16
	LAN	2 Gigabit LAN
	WLAN	WLAN (Optional via internal PCI-Express slot or external USB)
	Power Supply	350W ATX
Cooling	Middle: 2 (80 x 25mm) / Rear: 1 (97mm)	
I/O Ports & Control Buttons	Interface I/O port	1 PS/2 Keyboard 1 PS/2 Mouse 1 S/PDIF Out (Coaxial + Optical) 2 LAN(RJ45) port 6 USB 2.0/1.1 8 Channel Audio I/O
	Front Controls	Power on/off; system reset; 2 USB ports (2.0)
	Front Indicators	Power, LAN and HDD
Mechanical	Enclosure	2U (EIA-RS310D industry standard)
	Dimensions (H x W x D)	88.2mm x 482.6mm x 431mm (3.5in x 19in x 17in)
	Weight	10.05Kg/ 22.16lbs
Environmental	Temperature	0°C (32F) ~ 50°C (122F)
	Humidity	5% ~ 95% non-condensing

* Specifications subject to change without notice .